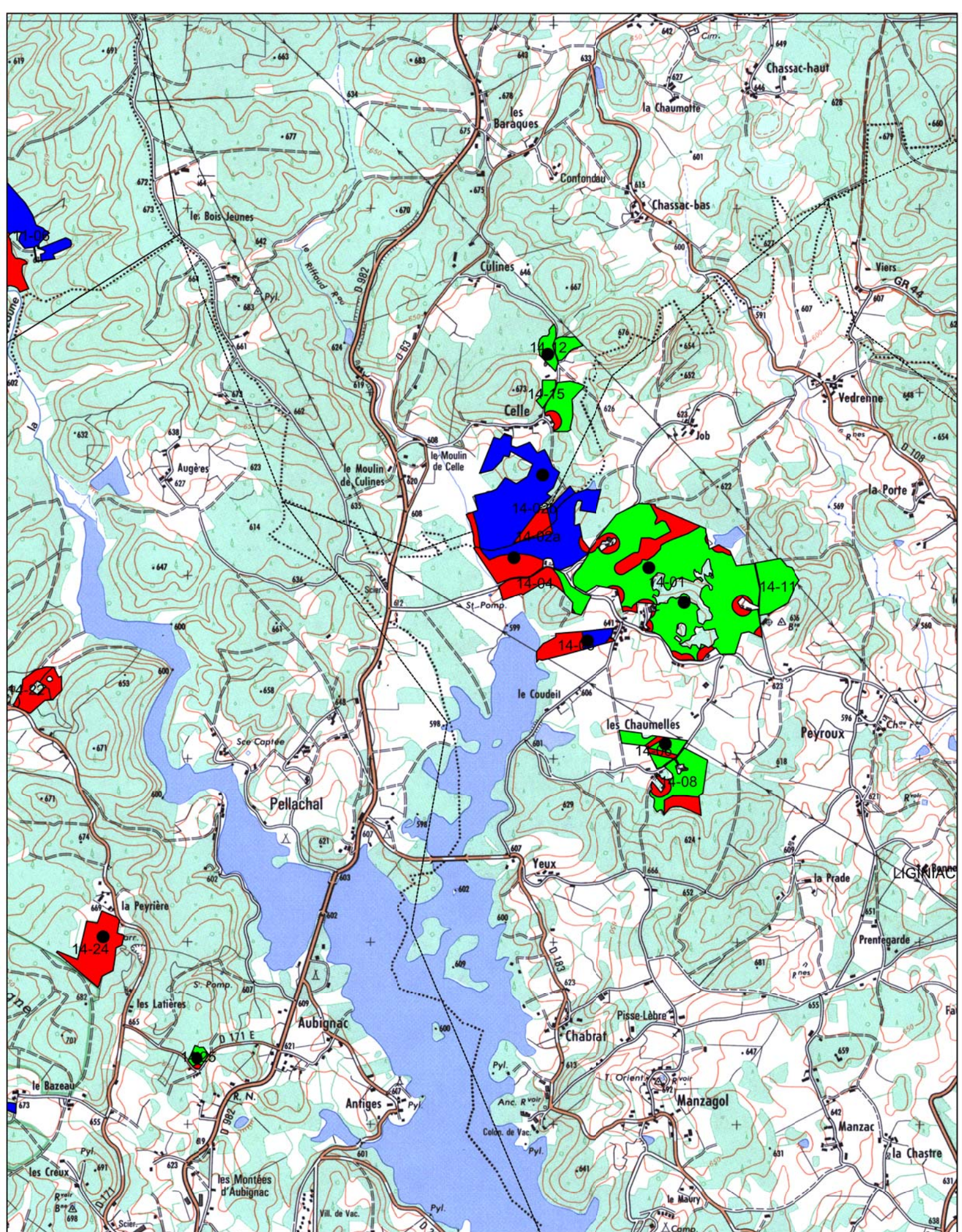




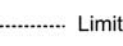




- | | | | |
|--|--|--------------------------|-------------|
| 0 | 1B | Limites communales | Plate forme |
| 1A | 2 | ● Points de prélèvement | |



**Plan d'épandage des composts et des eaux de ruissellement
de la plate forme Corrèze Amendement**

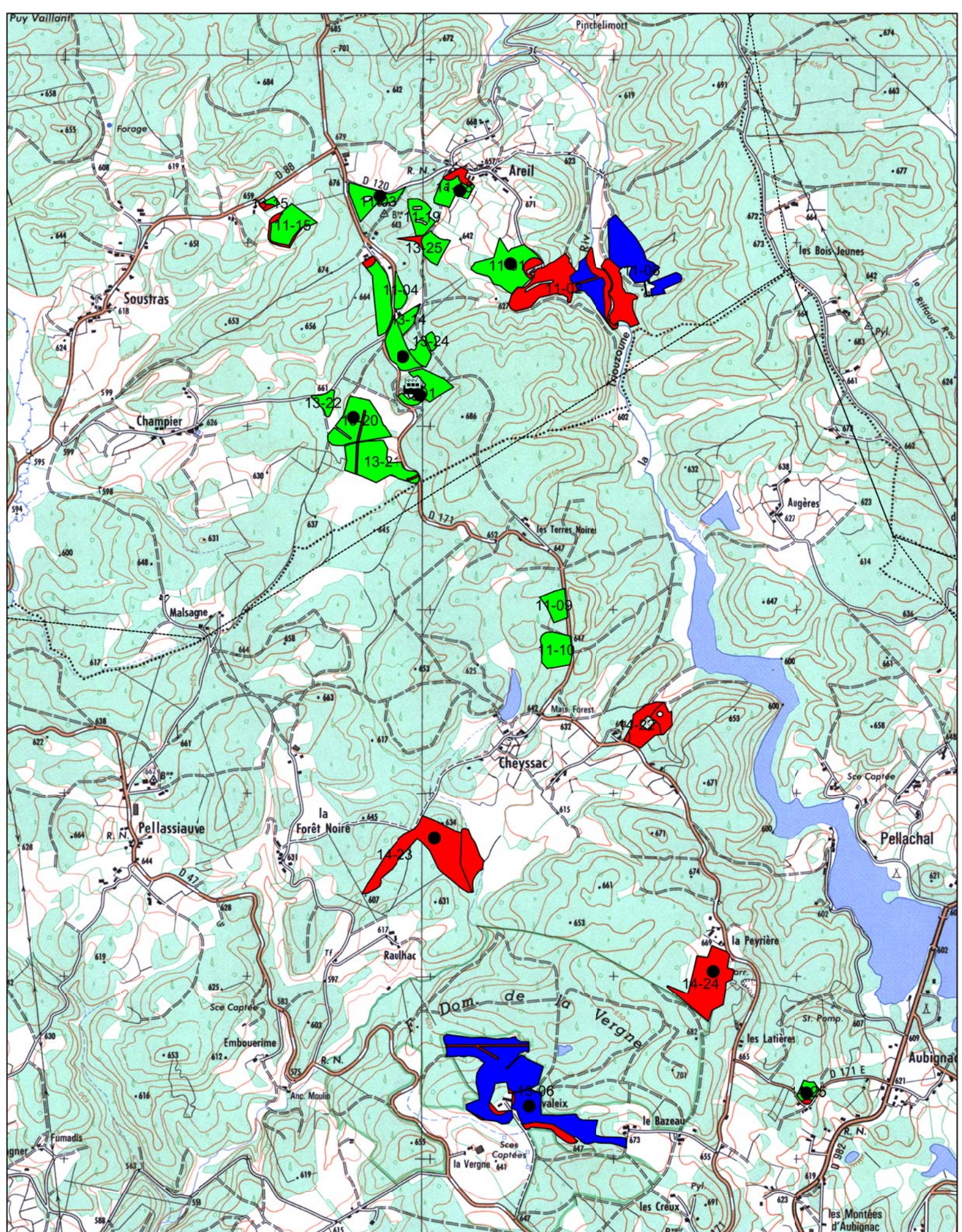
1 / 25 000



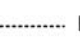






 0	 1B	 Limites communales	 Plate forme
 1A	 2	 Points de prélèvement	

**Plan d'épandage des composts et des eaux de ruissellement
de la plate forme Corrèze Amendement**



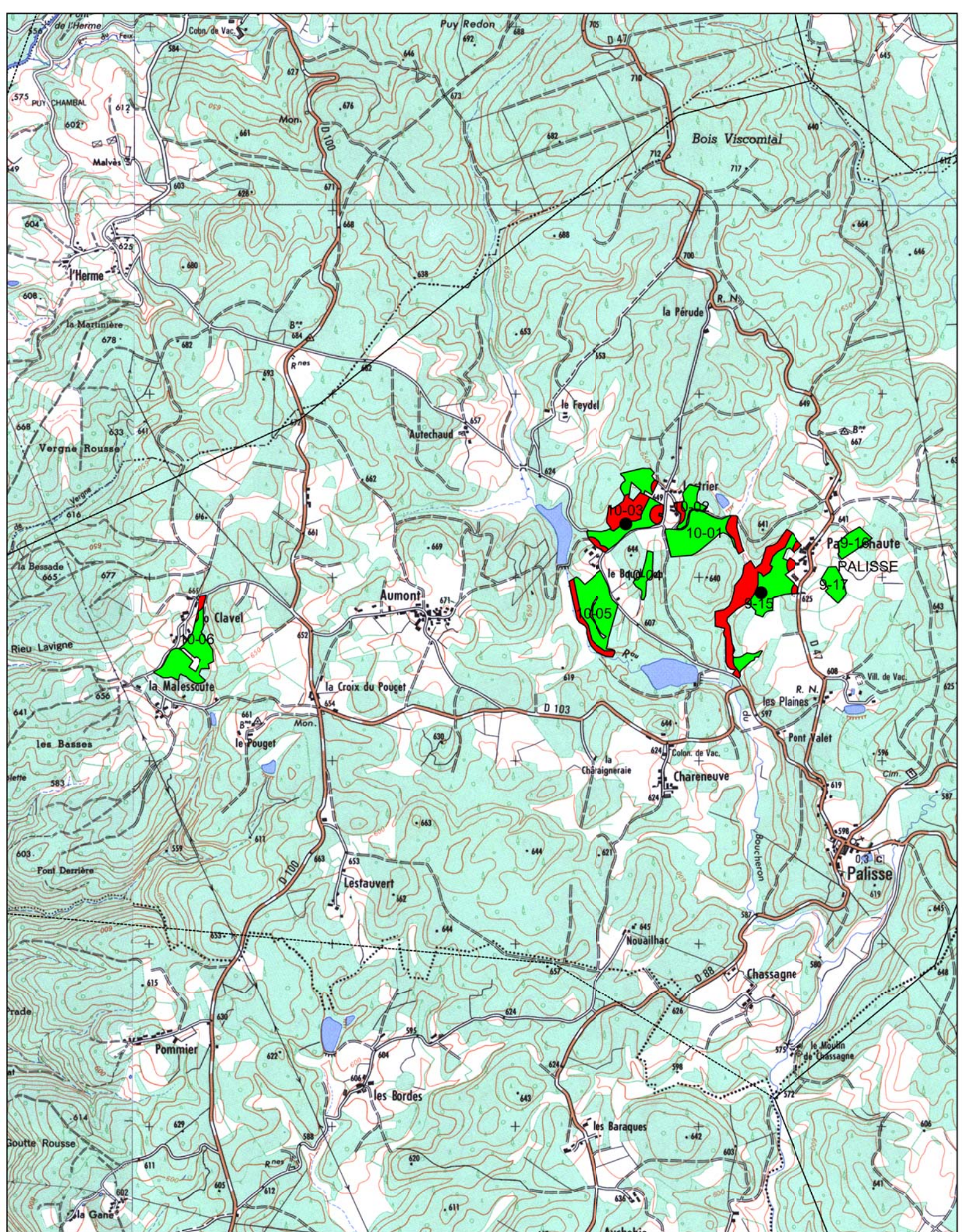




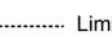




- | | | | |
|--|--|---|---|
|  0 |  1B |  Limites communales |  Plate forme |
|  1A |  2 |  Points de prélèvement | |



**Plan d'épandage des composts et des eaux de ruissellement
de la plate forme Corrèze Amendement**

1 / 25 000

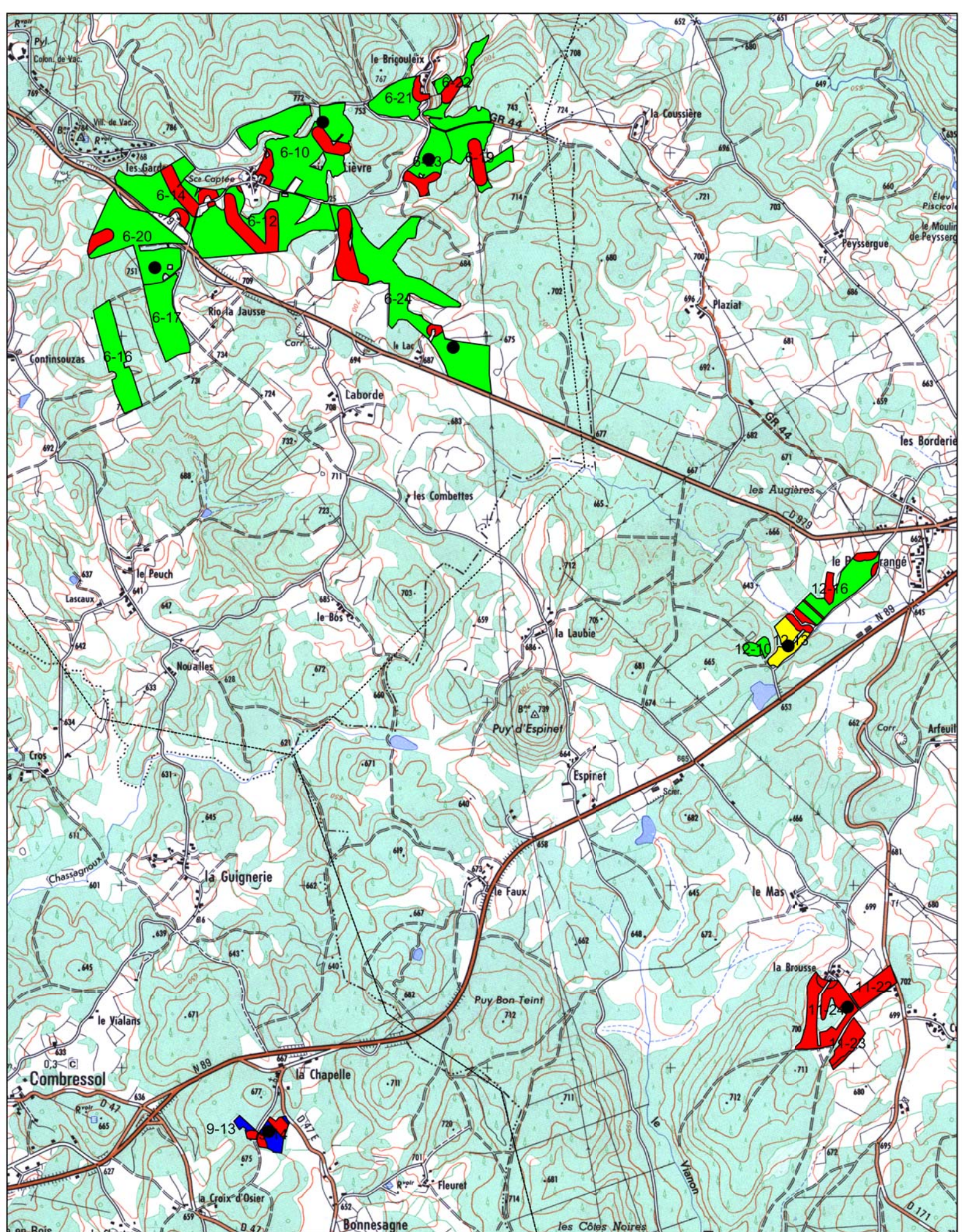


- | | | | | | | | |
|---|----|---|----|---|-----------------------|---|-------------|
|  | 0 |  | 1B |  | Limites communales |  | Plate forme |
|  | 1A |  | 2 |  | Points de prélèvement | | |



**Plan d'épandage des composts et des eaux de ruissellement
de la plate forme Corrèze Amendement**

1 / 25 000

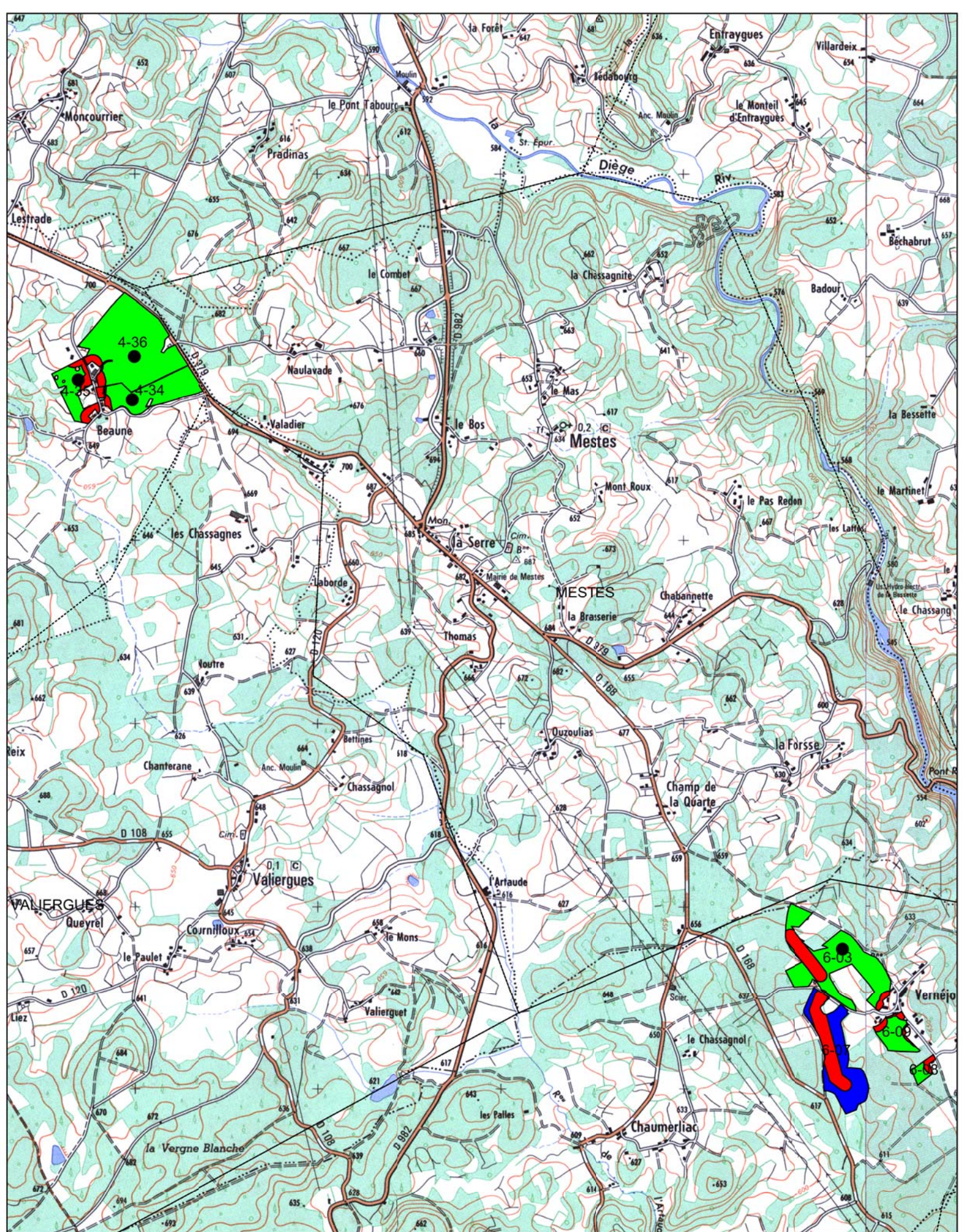


- | | | | |
|--|--|--------------------------|-------------|
| 0 | 1B | ----- Limites communales | Plate forme |
| 1A | 2 | ● Points de prélèvement | |



Plan d'épandage des composts et des eaux de ruissellement de la plateforme Corrèze Amendement

1 / 25 000

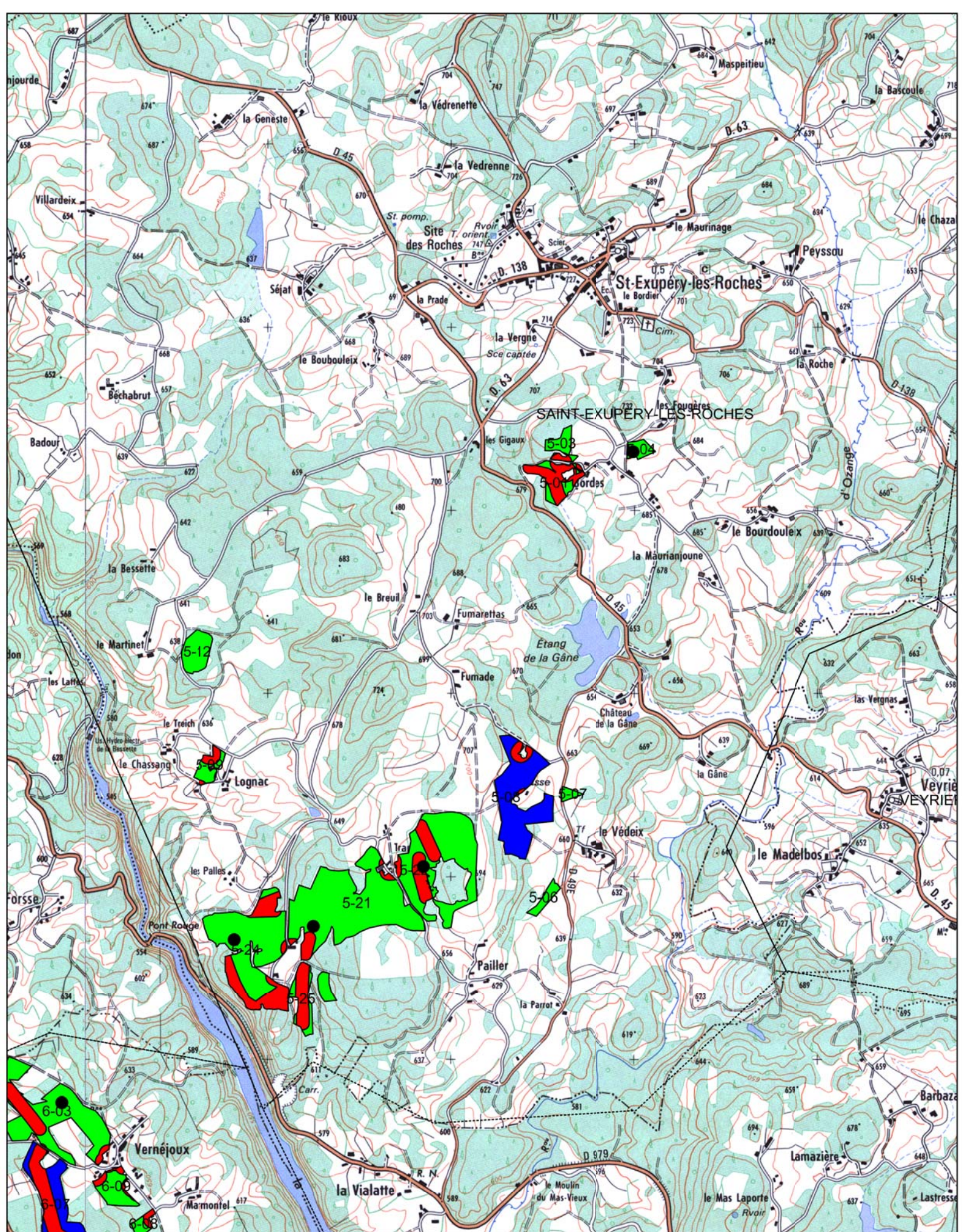




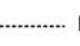




- | | | | |
|---|---|--------------------------|-------------|
| 0 | 1B | ----- Limites communales | Plate forme |
| 1A | 2 | ● Points de prélèvement | |



Plan d'épandage des composts et des eaux de ruissellement de la plate forme Corrèze Amendement

1 / 25 000

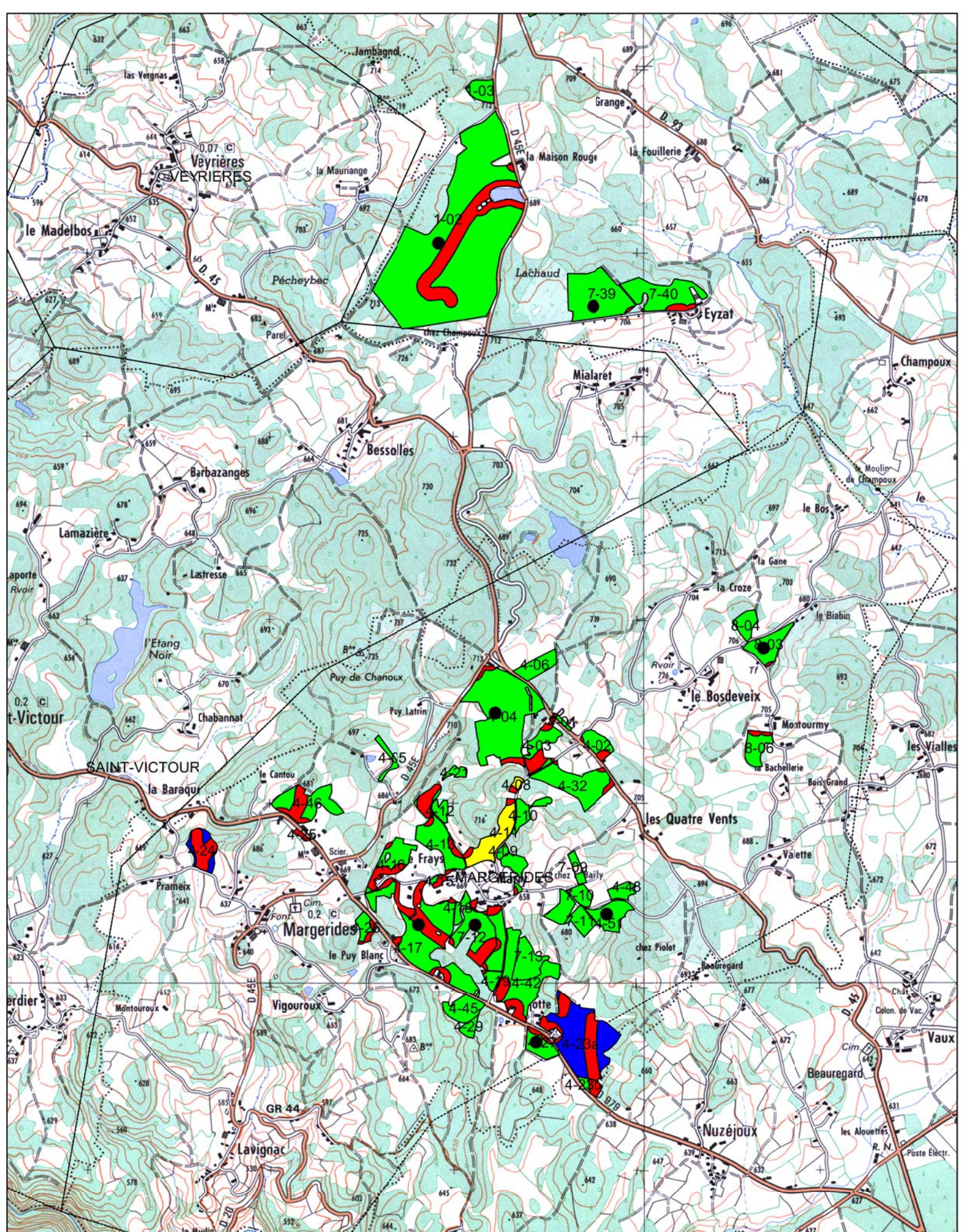


- | | | | | | | | |
|---|----|---|----|---|-----------------------|---|-------------|
|  | 0 |  | 1B |  | Limites communales |  | Plate forme |
|  | 1A |  | 2 |  | Points de prélèvement | | |



Plan d'épandage des composts et des eaux de ruissellement de la plate forme Corrèze Amendement

1 / 25 000



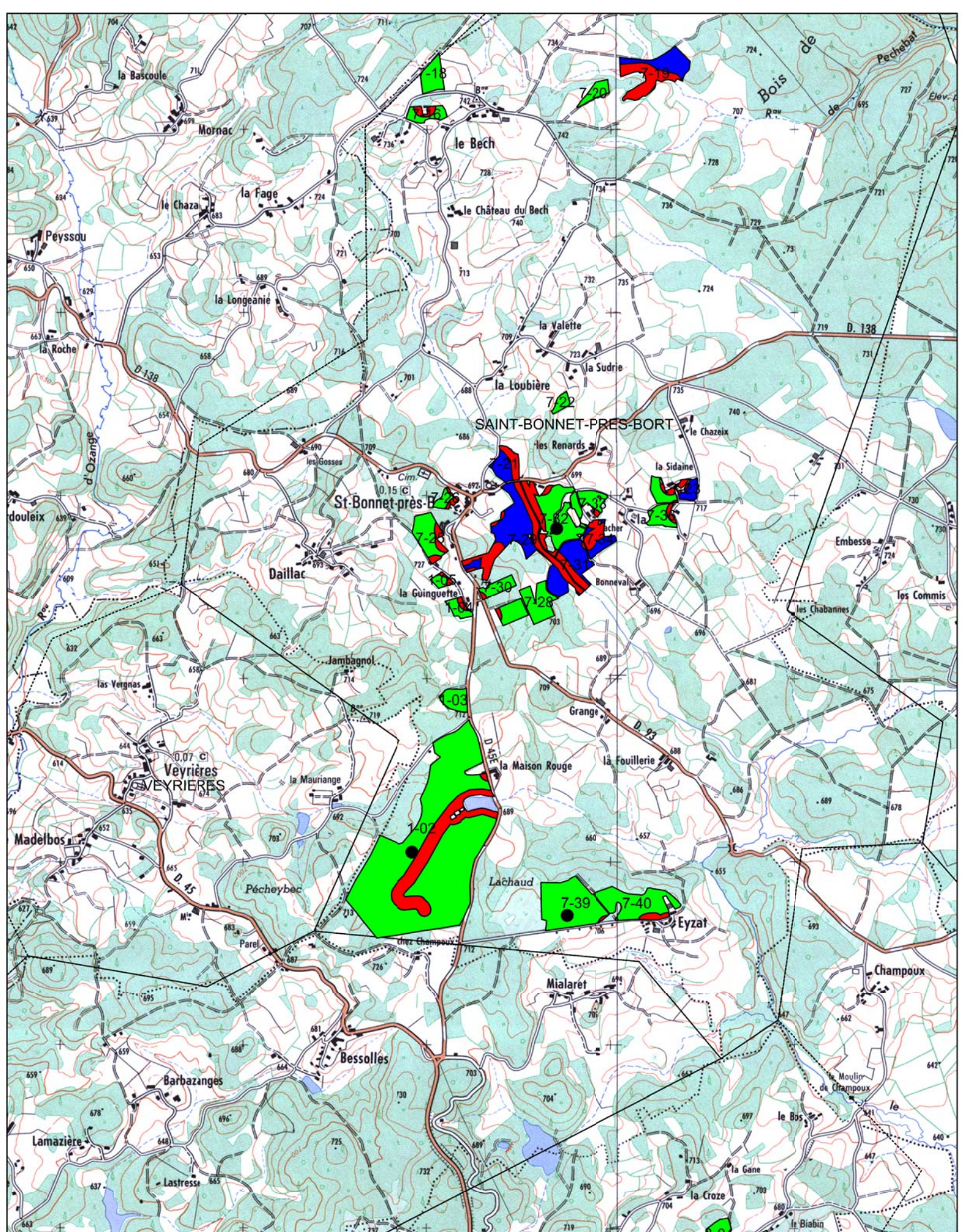
..... Limites communales
 ● Points de prélèvement

Plate forme



Plan d'épandage des composts et des eaux de ruissellement de la plate forme Corrèze Amendement

1 / 25 000

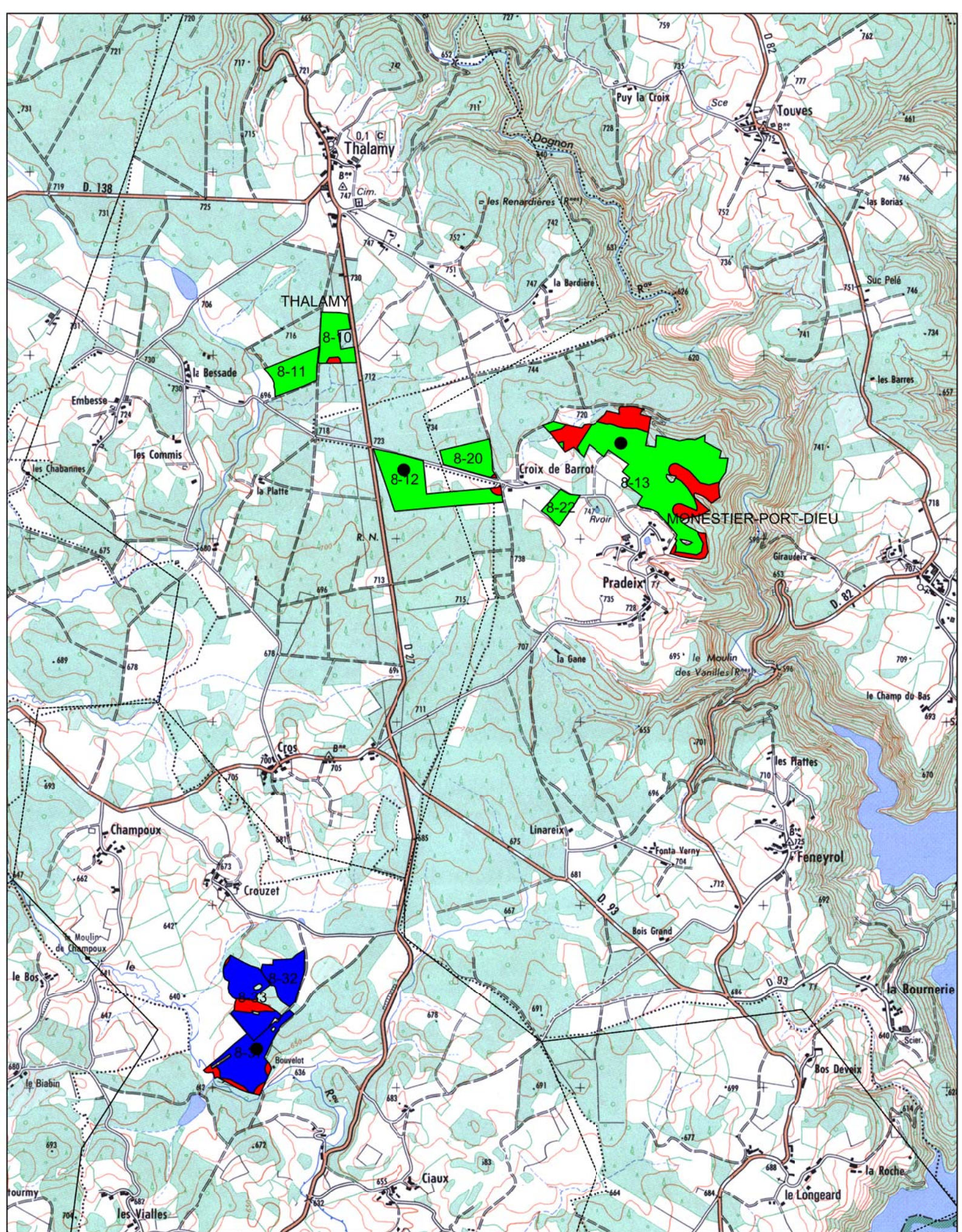




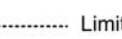




- | | | | |
|--|--|--------------------------|-------------|
| 0 | 1B | ----- Limites communales | Plate forme |
| 1A | 2 | ● Points de prélèvement | |



Plan d'épandage des composts et des eaux de ruissellement de la plate forme Corrèze Amendement

1 / 25 000

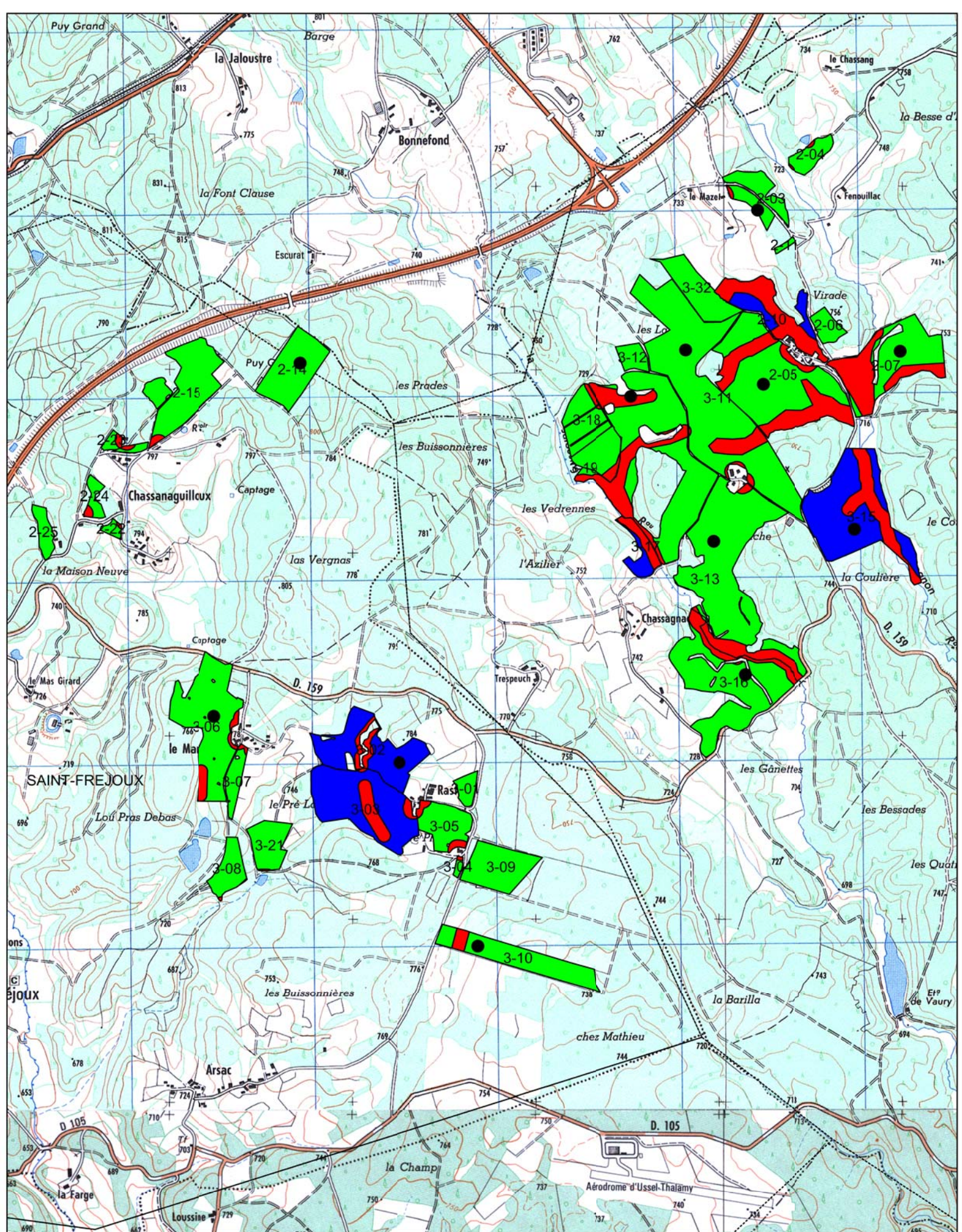


- | | | | | | | | |
|---|----|---|----|---|-----------------------|---|-------------|
|  | 0 |  | 1B |  | Limites communales |  | Plate forme |
|  | 1A |  | 2 |  | Points de prélèvement | | |



**Plan d'épandage des composts et des eaux de ruissellement
de la plate forme Corrèze Amendement**

1 / 25 000

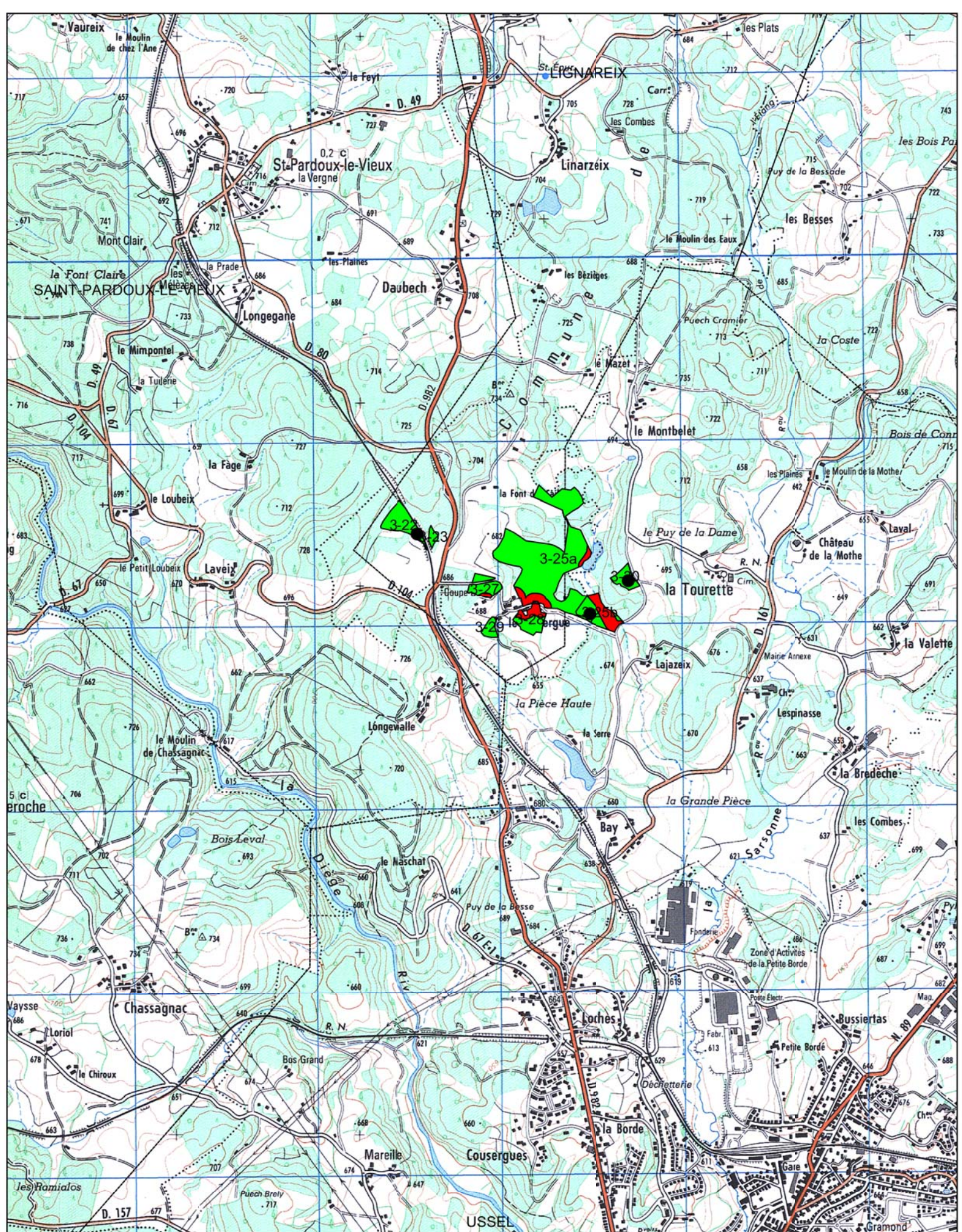


- | | | | |
|----|----|--------------------------|-------------|
| 0 | 1B | Limites communales | Plate forme |
| 1A | 2 | ● Points de prélèvement | |



Plan d'épandage des composts et des eaux de ruissellement de la plate forme Corrèze Amendement

1 / 25 000

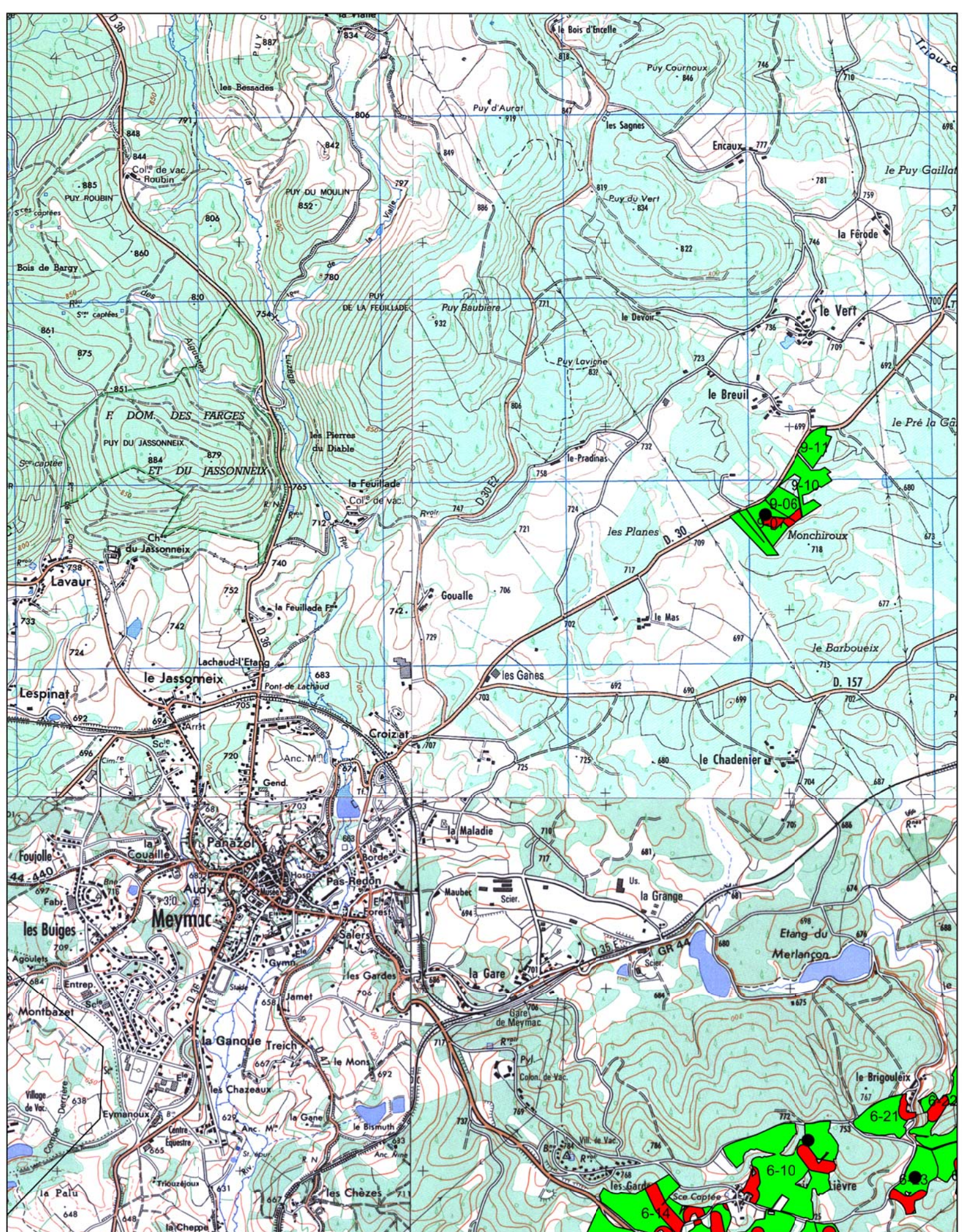


- | | | | |
|----|----|--------------------------|-------------|
| 0 | 1B | ----- Limites communales | Plate forme |
| 1A | 2 | ● Points de prélèvement | |



Plan d'épandage des composts et des eaux de ruissellement de la plate forme Corrèze Amendement

1 / 25 000

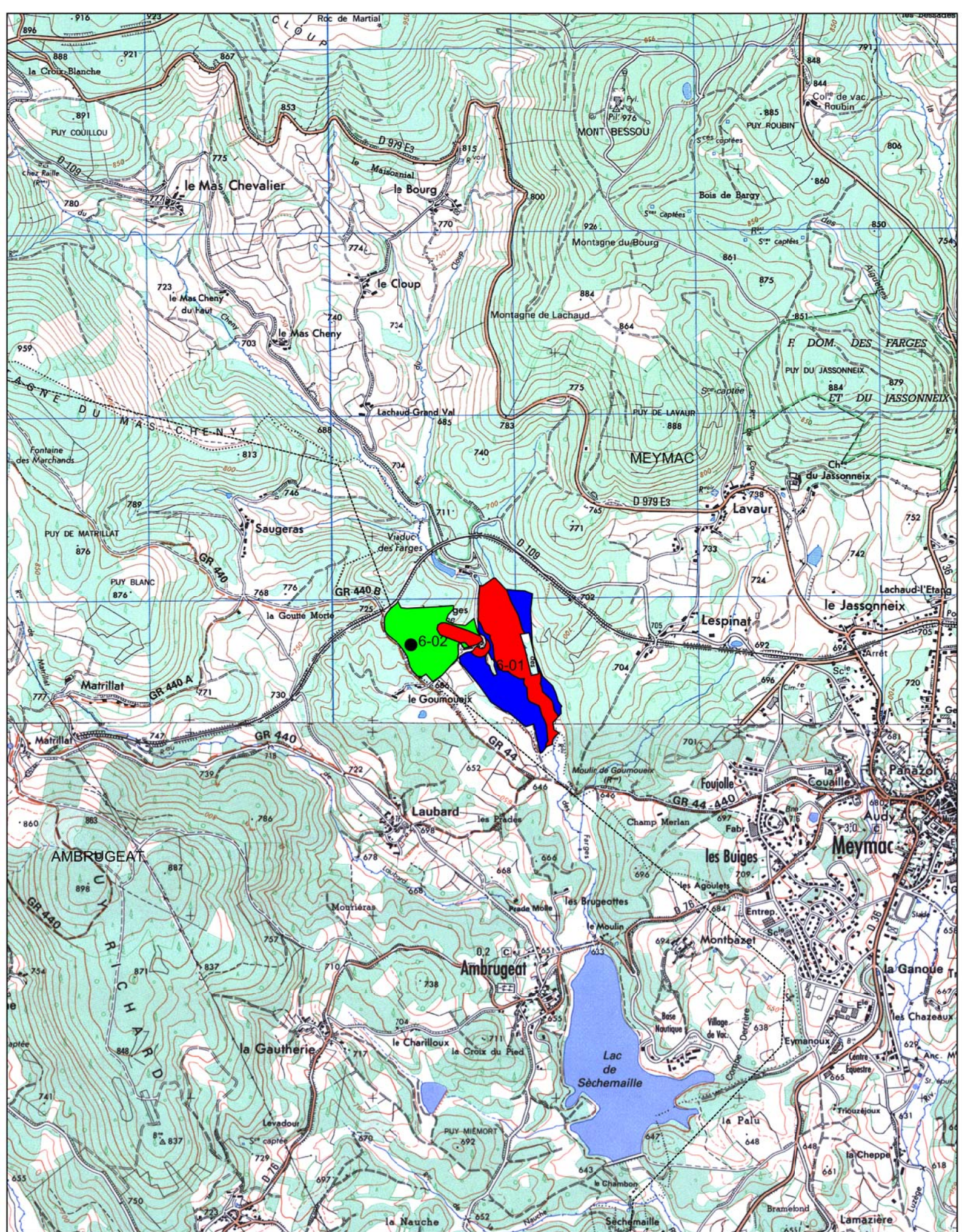


- | | | | |
|---|---|--------------------------|-------------|
| 0 | 1B | Limites communales | Plate forme |
| 1A | 2 | ● Points de prélèvement | |



**Plan d'épandage des composts et des eaux de ruissellement
de la plate forme Corrèze Amendement**

1 / 25 000



- | | | | |
|---|---|--------------------------|-------------|
| 0 | 1B | Limites communales | Plate forme |
| 1A | 2 | ● Points de prélèvement | |



**Plan d'épandage des composts et des eaux de ruissellement
de la plate forme Corrèze Amendement**

1 / 25 000